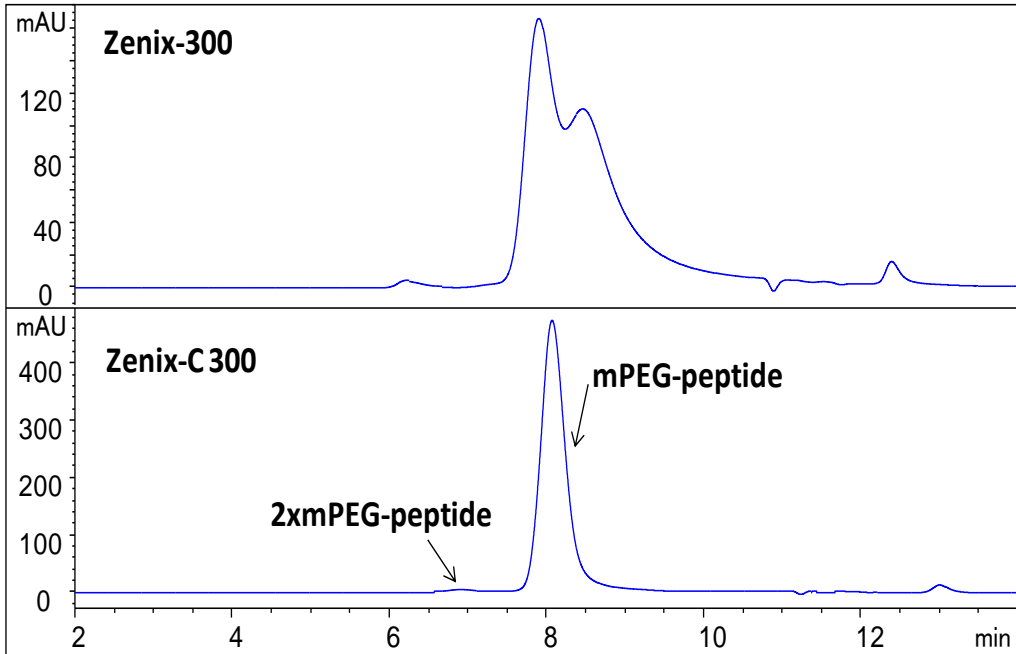
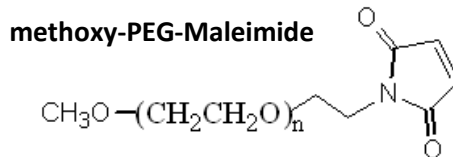
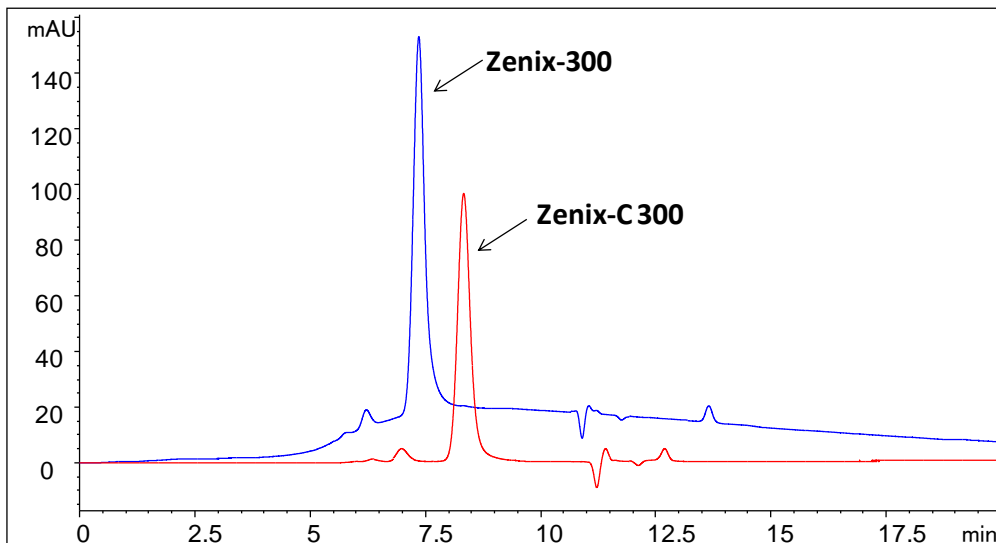


## Analysis of an mPEG-peptide on Zenix SEC Phases



Column:	Zenix SEC-300, 3 $\mu$ m, 7.8x300mm and Zenix-C SEC-300, 3 $\mu$ m, 7.8x300mm
Mobile Phase:	150 mM Sodium Phosphate Buffer, pH 7.0
Flow Rate:	1.0 mL/min
Temperature:	25 °C
Detection:	UV 214nm
Injection Volume:	20 $\mu$ L
Sample:	4kD peptide and 20kD mPEG-MAL (methoxy-PEG-Maleimide) (6mg/mL)





Column: Zenix SEC-300, 3 $\mu$ m, 7.8x300mm  
and Zenix-C SEC-300, 3 $\mu$ m, 7.8x300mm  
Mobile Phase: 150 mM Sodium Phosphate Buffer, pH 7.0  
Flow Rate: 1.0 mL/min  
Temperature: 25 °C  
Detection: UV 214nm  
Injection Volume: 20  $\mu$ L  
Sample: 20kD mPEG-MAL (methoxy-PEG-Maleimide) (1mg/mL)