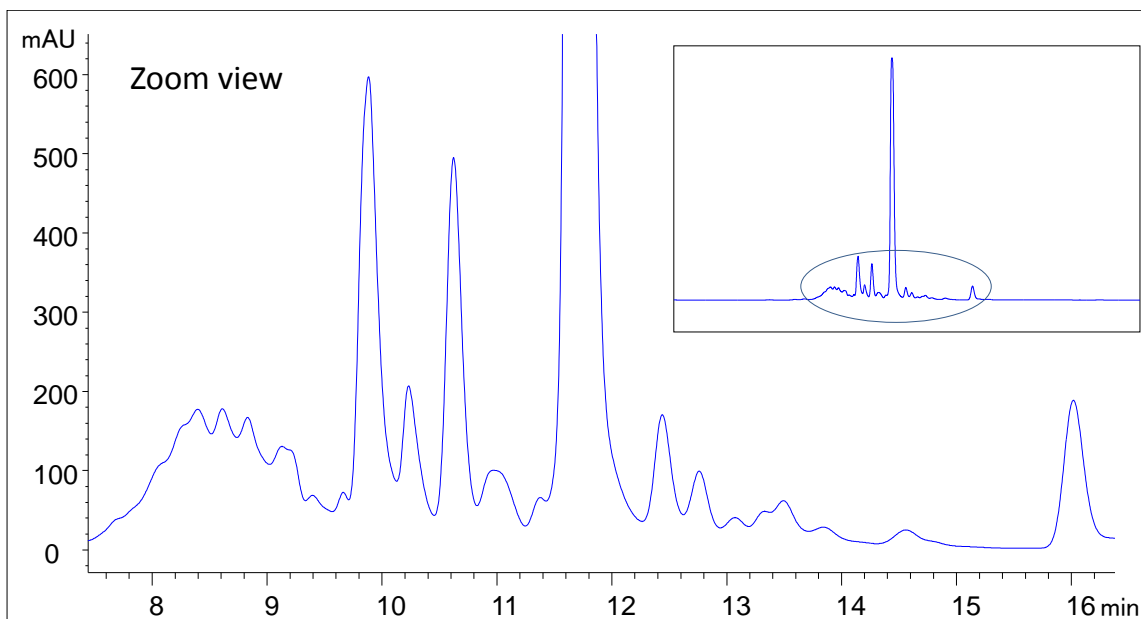




### Analysis of *E.coli* Tryptic Digest on Zenix™-80 (7830)



Column:	Zenix™ SEC-80 (3 μm, 80 Å, 7.8x300 mm)
Mobile Phase:	25 mM Sodium acetate + 300 mM NaCl, pH 4.5
Flow Rate:	0.8 mL/min
Temperature:	Ambient
Detection:	UV 214 nm
Injection Volume:	40 μL (20 μg digested protein)
Sample:	<i>E.coli</i> tryptic digest

Keywords: Size exclusion, Zenix, peptide, 80 Å pore size, *E. coli*, tryptic digest