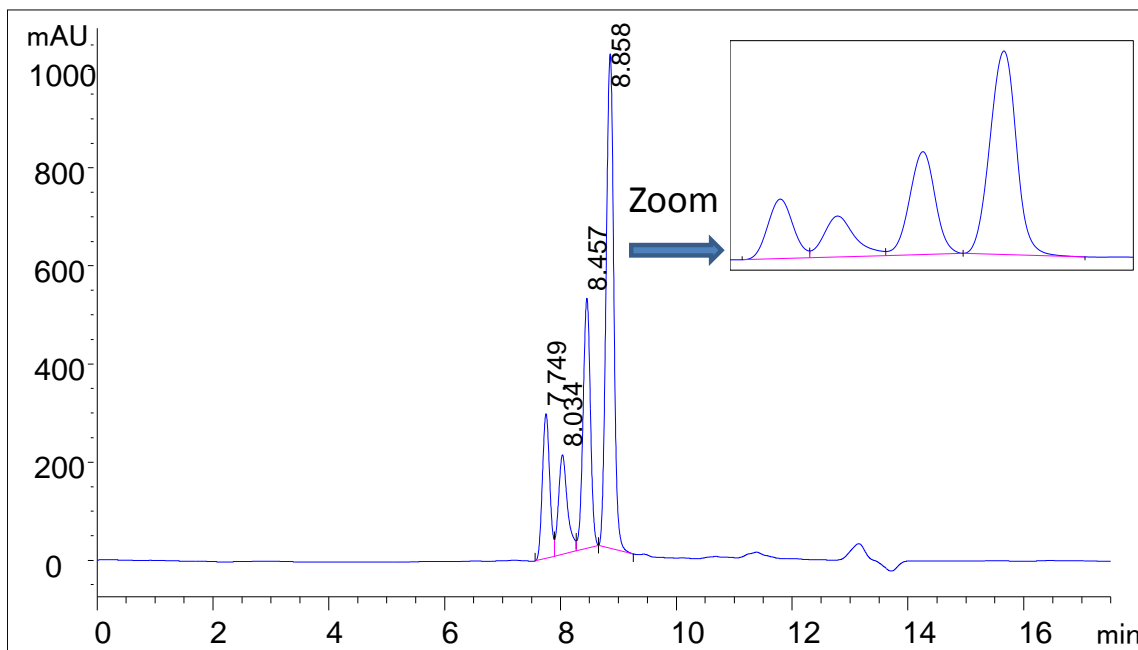




## Analysis of Four Peptide Mixture from 1kD to 6kD on Zenix™-80 (7830)



Column: Zenix™ SEC-80 (3  $\mu$ m, 80  $\text{\AA}$ , 7.8x300 mm)  
Mobile Phase: ACN:H<sub>2</sub>O:TFA=75:25:0.1(v/v)  
Flow Rate: 0.8 mL/min  
Temperature: Ambient  
Detection: UV 214 nm  
Injection Volume: 5  $\mu$ L  
Sample: Insulin from Porcine pancreas (7.749min, MW 5,778), Glucagon (8.034min, MW 3,483), Angiotensin I (8.45min, MW 1,297), Bradykinin (8.858, MW 1,060)

Keywords: Size exclusion, Zenix, peptide, 80  $\text{\AA}$  pore size, insulin, bradykinin, glucagon, angiotensin I