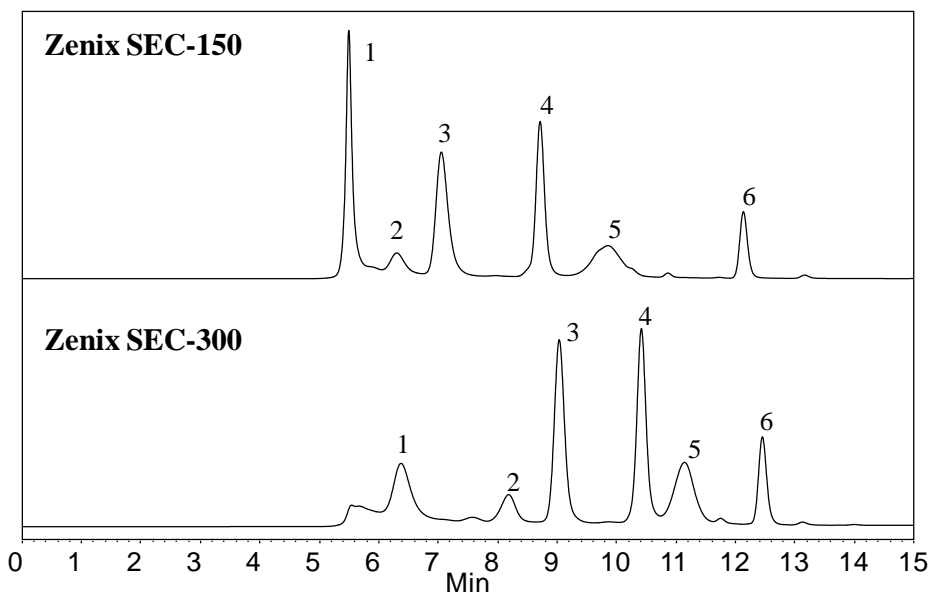




Separation of a mixture of proteins and peptide



Column: Zenix™ SEC (3 μm, 7.8x300 mm)
Mobile Phase: 150 mM Phosphate Buffer, pH 7
Flow Rate: 1.0 mL/min
Temperature: Ambient (~23° C)
Detection: UV 214nm
Injection Volume: 10 μL
Samples: 1) Thyroglobulin, 670kD; 2) BSA monomer, 66kD; 3) Ribonuclease A, 13.7kD; 4) poly-DL-alanine, 1-5 kD; 5) Uracil, 120D.

Keywords: Size exclusion, Zenix, protein, peptide