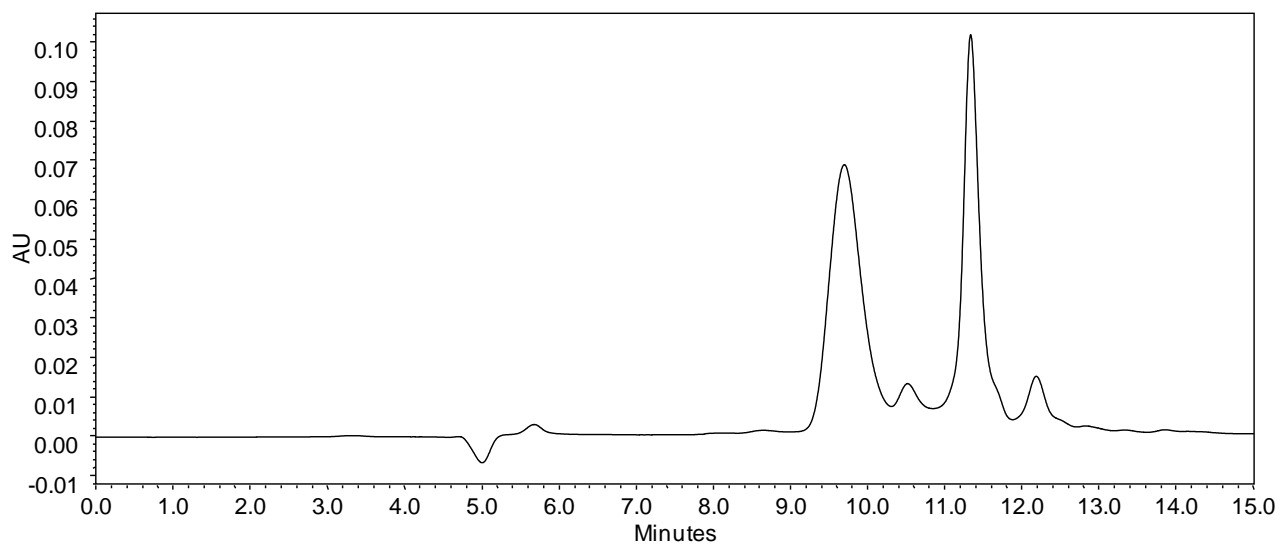




Separation of Human Recombinant Protein on SRT[®]-1000



Column: SRT[®] SEC-1000 (5 μ m, 1000 \AA , 4.6 x 300 mm)
Mobile Phase: 150 mM phosphate buffer, pH 7
Flow Rate: 0.35 mL/min
Temperature: Ambient
Sample: rhIL-10 sR
Concentration: 1 mg/mL
Injection Volume: 3 μ L

Keywords: size exclusion, SRT, SRT 1000, human recombinant protein