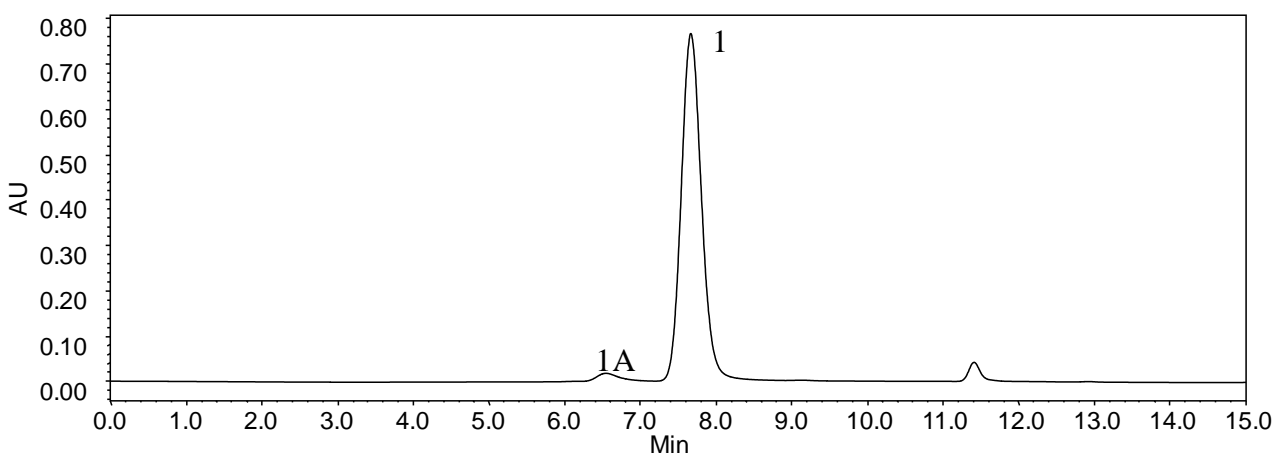




### Analysis of MAb on SRT<sup>®</sup>-C 300



Column:	SRT <sup>®</sup> -C 300 (5 $\mu$ m, 300 $\text{Å}$ , 7.8x300 mm)
Mobile Phase:	150 mM sodium phosphate buffer, pH 7
Temperature:	Ambient (~23 $^{\circ}$ C)
Flow Rate:	1.0 mL/min
Detection:	UV 214 nm
Sample Concentration:	5 mg/mL
Injection Volume:	2.5 $\mu$ L
Sample:	MAb

Keywords: Size exclusion, SRT-C, monoclonal antibody