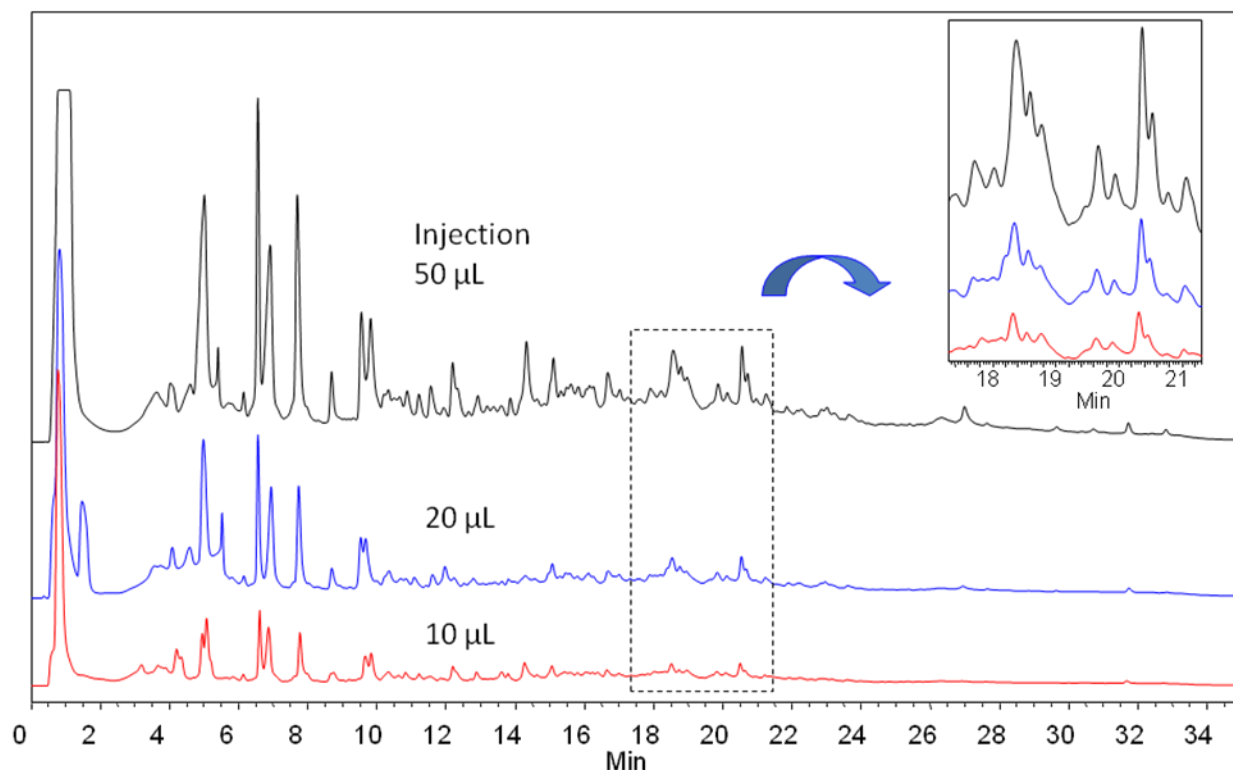


Separation of *E. coli* Lysate on Proteomix[®] SAX-NP3 (3 μ m, 4.6x50 mm) – High Loading Capacity



Column:	Proteomix [®] SAX-NP3 (3 μ m, 4.6x50 mm)
Mobile Phases:	A: 20 mM Tris, pH 9.0; B: A + 0.5 M NaCl
Gradient:	0-100%B (30 min)
Flow Rate:	0.5 mL/min
Detection:	UV 280 nm
Temperature:	25 $^{\circ}$ C
Concentration:	2.5 mg/mL
Injection Volume:	10 μ L, 20 μ L, 50 μ L
Sample:	<i>E. coli</i> Lysate

Keywords: Ion-exchange, Proteomix, strong anion exchange, *E. coli*, Lysate, high loading capacity