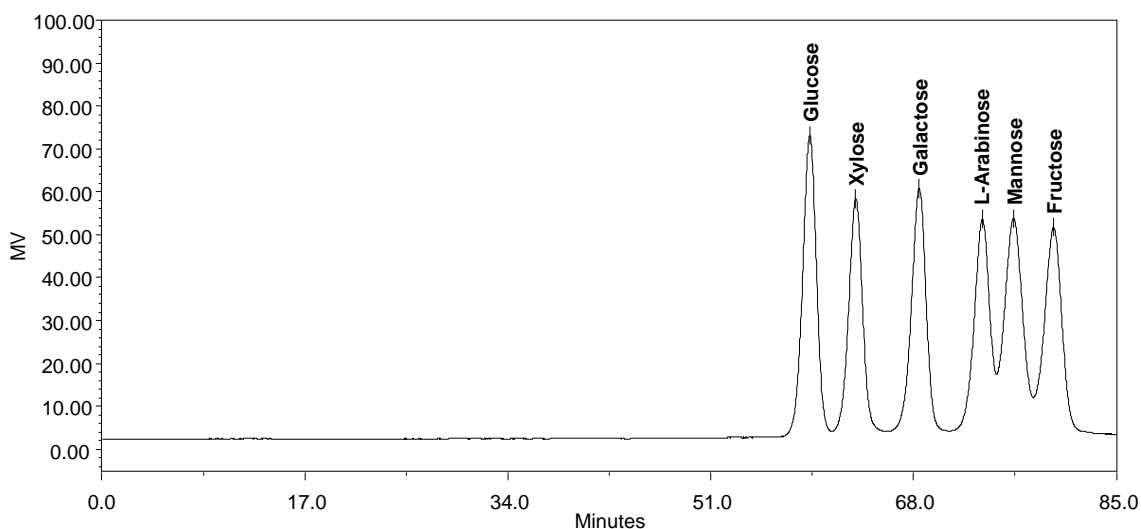




Separation of Glucose/Xylose/Galactose/L-Arabinose/Mannose/Fructose on two Carbomix[®] Pb-NP10 (10 μ m, 5%, 7830) in tandem



Column: 2 x Carbomix[®] Pb-NP10 (10 μ m, 5% crosslinkage, 7.8x300 mm)
Mobile Phase: water
Temperature: 75 $^{\circ}$ C
Flow Rate: 0.3 mL/min
Detection: RI
Sample Injection: 10 μ L
Samples: Glucose/Xylose/Galactose/L-Arabinose/Mannose/Fructose (0.5 M each)

Keywords: Carbohydrate, Carbomix, lead form, glucose, mannose, arabinose, xylose, galactose, fructose