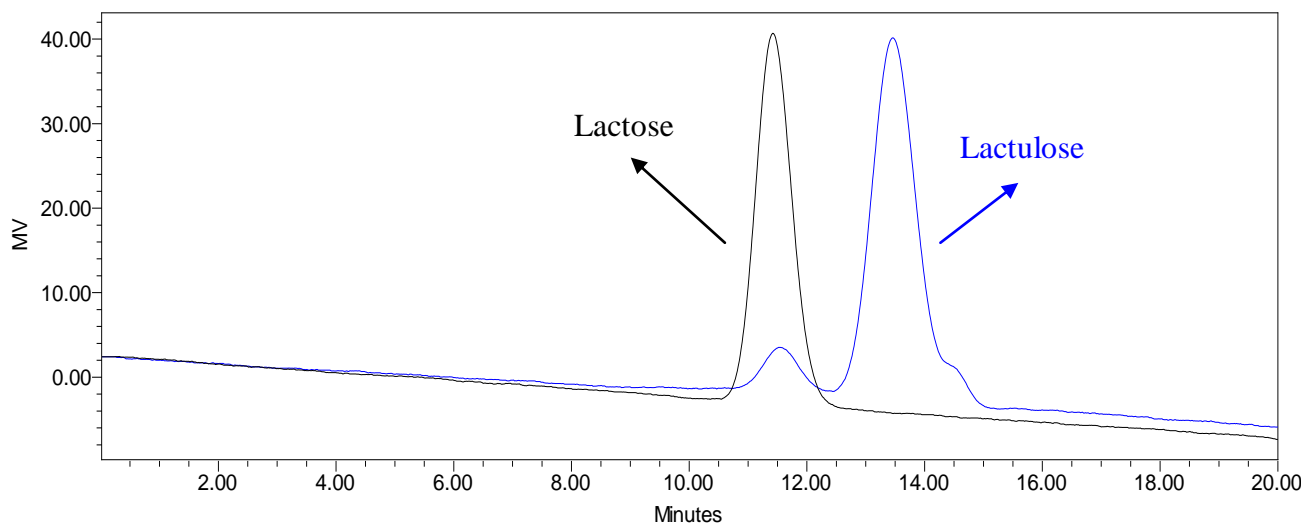




**Analysis of Lactose and Lactulose on Carbomix<sup>®</sup>-Pb  
(10  $\mu$ m, 8%, 7.8x300 mm)**



|                   |  |
|-------------------|--|
| Column:           | Carbomix <sup>®</sup> -Pb NP10 (10 $\mu$ m, 8% crosslinkage, 7.8x300 mm) |
| Mobile Phase:     | water  |
| Temperature:      | 75 °C  |
| Flow Rate:        | 0.6 mL/min   |
| Detection:        | RI   |
| Sample Injection: | 5 $\mu$ L  |
| Samples:          | Lactose & Lactulose  |

Keywords: Carbohydrate, Carbomix, lead form, lactose, lactulose